

SPECIFICATIONS:

MODEL NUMBER: 8000-151-296

PUMP DESIGN: Positive Displacement 3 Chamber Diaphragm Pump

CAM: 2.0 Degree

MOTOR: Permanent Magnet, P/N 11-127-10

VOLTAGE: 24 VDC Nominal

PRESSURE SWITCH: Adjustable Shut-Off (Range 40-60 PSI)

Factory Set @ 60 PSI, Turn On 45 PSI ± 5 PSI

LIQUID TEMPERATURE: 170 Degrees Fahrenheit (77 Degrees Centigrade) Max.

PRIME: Self-Priming Up To 8 Ft. Vertical,
Max. Inlet Pressure 30 PSI (2.1 Bar)

PORTS: 3/8"-18 NPT Female

MATERIAL OF CONSTRUCTION:

PLASTICS- Polypropylene

VALVES- Buna-n

DIAPHRAGM- Geolast (Main), Buna-n (Switch)

FASTENERS- Zinc Plated Steel

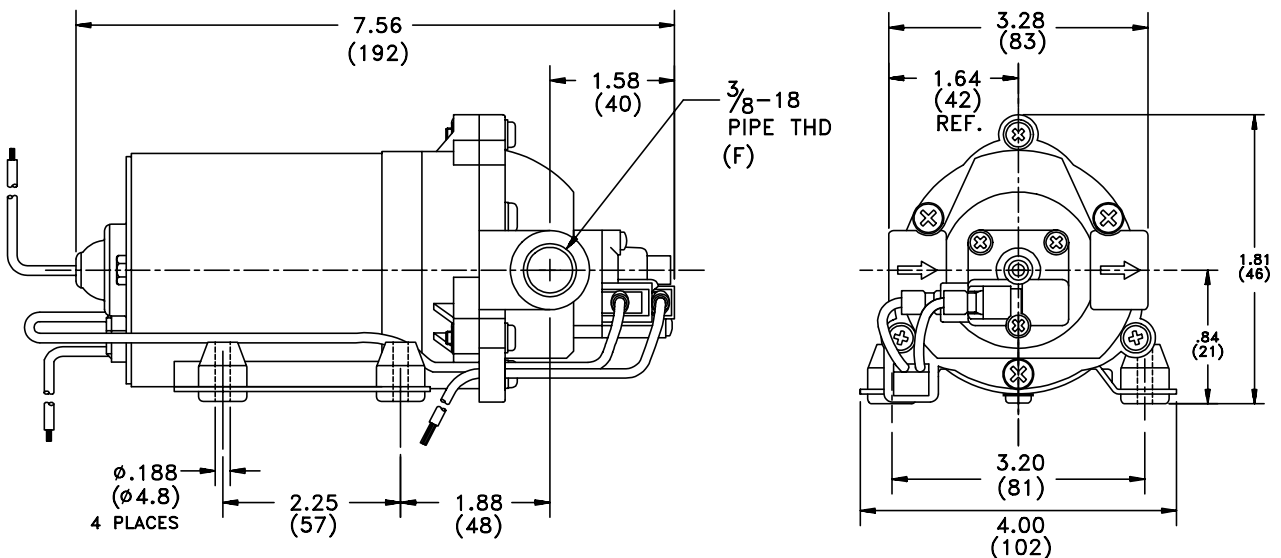
NET WEIGHT: 3.85 Lbs (1.75 Kg)

DUTY CYCLE: Intermittent (See Temperature Rise Chart)

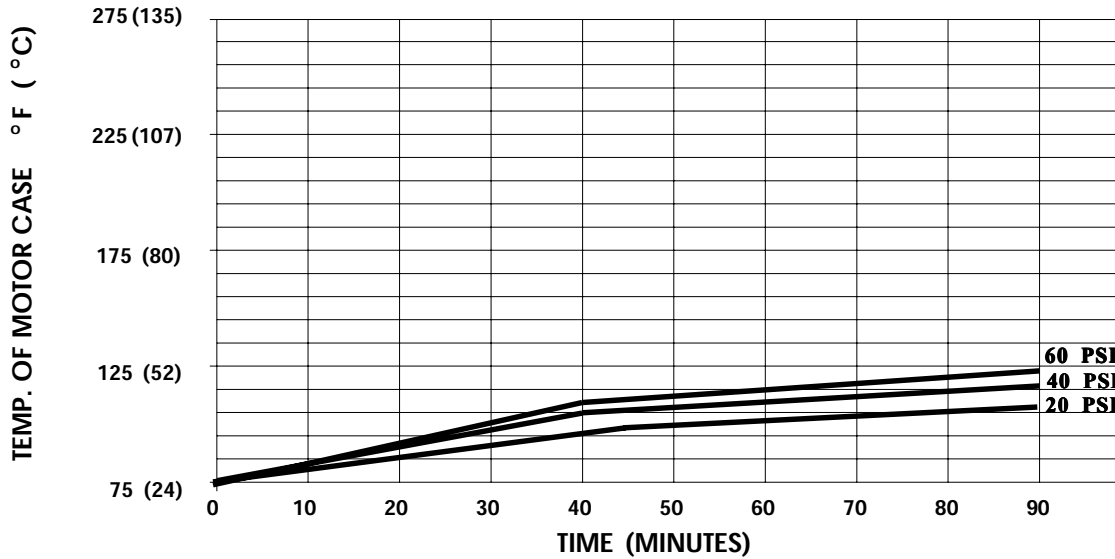
TYPICAL APPLICATIONS: Soil Extraction

BYPASS: 80 PSI Max.

DIMENSIONS:

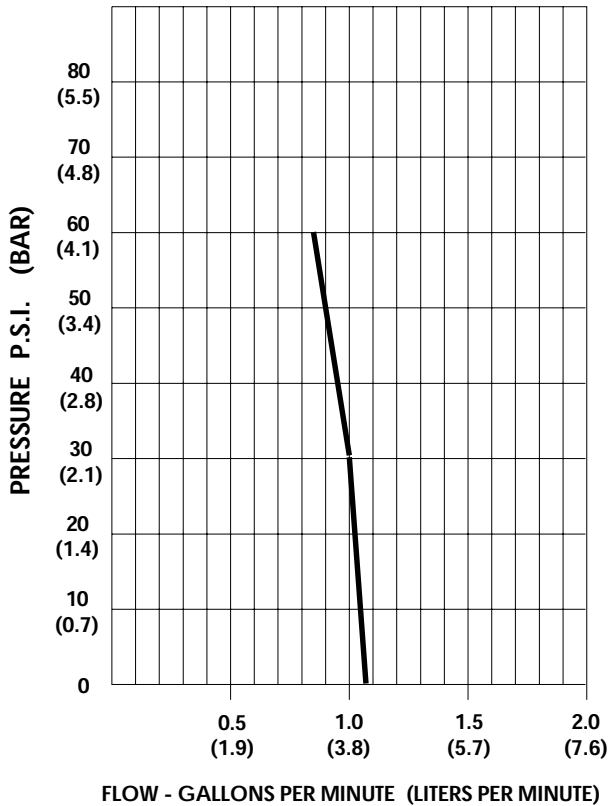


TEMPERATURE RISE



THIS GRAPH IS FOR USE AS A DESIGN GUIDE. IT IS BASED ON RUNNING CONTINUOUSLY WITH AN AMBIENT TEMPERATURE OF 75° F IN STILL AIR.

TYPICAL PERFORMANCE



PRESSURE (PSI)	FLOW (GPM/LIT)	RPM MIN/MAX	CURRENT (AMPS)	VOLTAGE (VOLTS)
OPEN	1.08/4.1	2310/2380	1.1	24 VDC
10	1.06/4.0	2290/2365	1.3	"
20	1.04/3.9	2260/2345	1.5	"
30	1.00/3.8	2235/2310	1.8	"
40	0.97/3.7	2210/2295	2.0	"
50	0.92/3.5	2190/2270	2.2	"
60	0.84/3.2	2170/2250	2.4	"

-SPECIFICATIONS SUBJECT TO CHANGE WITHOUT NOTICE.

-ALL DATA BASED ON TESTING WITH WATER AT AMBIENT TEMPERATURE.